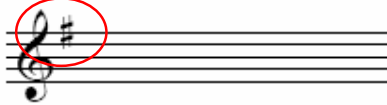


# MAJOR KEY SIGNATURES

## What Is A Key Signature?

The Key Signature is usually located between the Clef and the Time Signature on a music staff. It indicates which notes are to be sharp or flat during a piece of music.

For example if we saw the key of G Major - F# would be in the key signature thus making every F during the piece unless specified an F sharp.



## Order Of Sharps/ Flats In Key Signatures

Here is a sentence to help remember the order the sharps should be placed in the Key Signature.



**Father Charles Goes Down And Ends Battle**

Read the sentence backwards and you get the order the flats should be placed in.

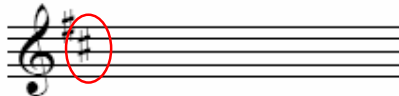


**Battle Ends And Down Goes Charlie's Father**

## How To Work Out The Major Key From A Key Signature

### SHARP KEY SIGNATURE (#)

The last sharp shown on the key signature will be the last note of the scale before arriving back at the Key Note of the Scale. For example if we look at the staff below C# is the last sharp in the key signature and the note that follows is D. Thus making D the Key Note of the Major Scale.



### FLAT KEY SIGNATURE (b)

The last flat shown on the key signature will be the fourth note of the 8 note scale Therefore if we were to count backwards four notes we would arrive at the Key Note of the Major Scale. For example if we look at the staff below Db is the last flat in the key signature and if we count back four notes the Key Note of the Major Scale is Ab. If you look below you will also notice that Ab is the flat that precedes Db.

