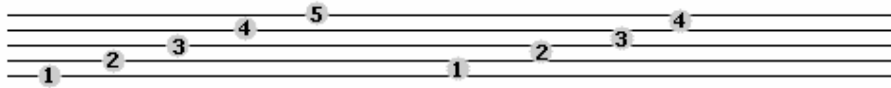


READING MUSICAL NOTES (1)

What Is A Staff?

The musical staff is made up of 5 lines and 4 spaces



The notes are determined on which clef we use.
When reading Piano music we use two different clefs:

For the **Right Hand** we use the **Treble Clef**



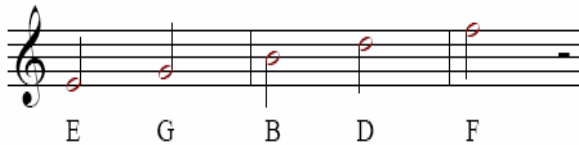
For the **Left Hand** we use the **Bass Clef**



Here are some phrases that will help you to remember the notes on the staff in both Treble and Bass Clef.

Treble Clef

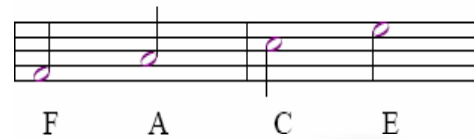
LINES



Every Good Boy Deserves Football



SPACES



F A C E



Bass Clef

LINES



Grizzly Bears Do Fart A lot



SPACES



All Cows Eat Grass

